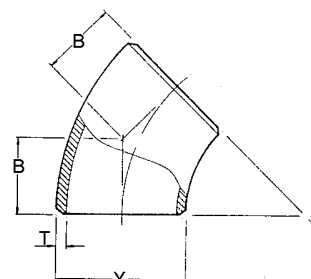
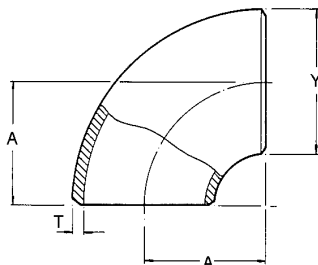
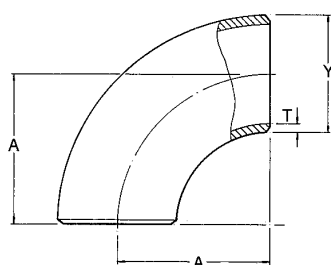


Butt Weld Fittings to ANSI.B16.9 & BS1640 : Long & Short Radius Elbows

NOMINAL PIPE SIZE		OUTSIDE DIAMETER Y	WALL THICKNESS T		45 ELBOW LONG RADIUS CENTRE TO FACE B	APPROX WEIGHT	90 ELBOW LONG RADIUS CENTRE TO FACE A	APPROX WEIGHT	90 ELBOW SHORT RADIUS CENTRE TO FACE A	APPROX WEIGHT
MM	IN	MM	MM	Schedule	MM	KG	MM	KG	MM	KG
15	1/2"	21.3	2.78	STD	15.9	0.04	38.1	0.08	-	-
			3.73	X.S	15.9	0.05	38.1	0.10	-	-
20	3/4"	26.7	2.87	STD	11.1	0.04	28.6	0.08	-	-
			3.91	X.S	11.1	0.05	28.6	0.11	-	-
25	1"	33.4	3.38	STD	22.2	0.09	38.1	0.15	25.4	0.11
			4.55	X.S	22.2	0.11	38.1	0.19	25.4	0.14
32	1 1/4"	42.2	3.56	STD	25.4	0.14	47.6	0.28	31.75	0.18
			4.85	X.S	25.4	0.2	47.6	0.39	31.75	0.24
40	1 1/2"	48.3	3.68	STD	28.6	0.2	57.1	0.4	38.1	0.26
			5.08	X.S	28.6	0.25	57.1	0.5	38.1	0.35
50	2"	60.3	3.91	STD	34.9	0.36	76.2	0.72	50.8	0.5
			5.54	X.S	34.9	0.5	76.2	1.0	50.8	0.68
65	2 1/2"	73.0	5.16	STD	44.4	0.73	95.2	1.46	63.5	0.95
			7.01	X.S	44.4	0.91	95.2	1.82	63.5	1.27
80	3"	88.9	5.49	STD	50.8	1.1	114.3	2.18	76.2	1.45
			7.62	X.S	50.8	1.45	114.3	2.86	76.2	1.95
100	4"	114.3	6.02	STD	63.5	2.1	152.4	4.2	101.6	2.8
			8.56	X.S	63.5	2.9	152.4	5.7	101.6	3.9
125	5"	141.3	6.65	STD	79.4	3.4	190.0	6.8	127.0	4.8
			9.5	X.S	79.4	5.0	190.0	10.0	127.0	6.5
150	6"	168.3	7.11	STD	95.2	5.1	229.0	10.1	152.4	6.8
			10.97	X.S	95.2	7.7	229.0	15.3	152.4	10.2
200	8"	219.1	8.18	STD	127.0	10.2	305.0	20.4	203.0	13.6
			12.7	X.S	127.0	15.5	305.0	30.9	203.0	20.9
250	10"	273.9	9.27	STD	159.0	18.1	381.0	36.1	254.0	24.1
			12.7	X.S	159.0	24.4	381.0	48.8	254.0	32.5
300	12"	323.9	9.52	STD	190.0	26.6	457.0	53.1	305.0	35.4
			12.7	X.S	190.0	35.0	457.0	70.0	305.0	46.7
350	14"	355.6	9.52	STD	222.0	34.1	533.0	68.1	356.0	45.4
			12.7	X.S	222.0	45.0	533.0	90.0	356.0	60.0
400	16"	406.4	9.52	STD	254.0	45.0	610.0	89.3	406.0	59.5
			12.7	X.S	254.0	59.0	610.0	118.0	406.0	78.7
450	18"	457.0	9.52	STD	286.0	56.5	686.0	113.0	457.0	75.6
			12.7	X.S	286.0	75.0	686.0	150.0	457.0	100.0
500	20"	508.0	9.52	STD	318.0	85.0	762.0	140.0	508.0	93.5
			12.7	X.S	318.0	112.5	762.0	186.0	508.0	124.0
600	24"	610.00	9.52	STD	381.0	101.5	914.0	203.0	610.0	135.0
			12.7	X.S	381.0	134.5	914.0	269.0	610.0	179.0



North East Office

Charlton Street • Grimsby • N E Lincolnshire • DN31 1SQ
Tel 01472361 425 • Fax 01472 361420
E-mail sales@mjwilsongroup.com

North West Office

Flotech House • Stuart Road • Bredbury Stockport • Cheshire • SK6 2SR
Tel 0161 406 2200 • Fax 0161 406 9196
E-mail sales@mjwilsongroup.com

Southern Office

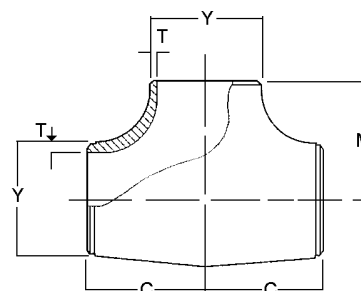
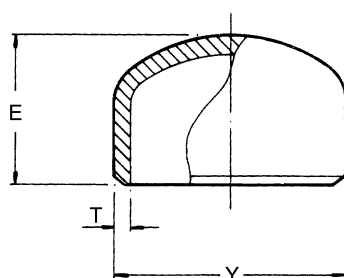
Unit 6 Bentley Street • Gravesend • Kent • DA12 2DH
Tel 01474 357660 • Fax 01474 354198
E-mail sales@mjwilsongroup.com

Wales Office

Unit 3 Moy Road Industrial Estate • Taffs Well • Cardiff • CF15 7QR
Tel 02920 815000 • Fax 02920 813051
E-mail sales@mjwilsongroup.com

BUTT WELD FITTINGS TO ANSI.B.16.9 & BS1640: EQ TEES & CAPS

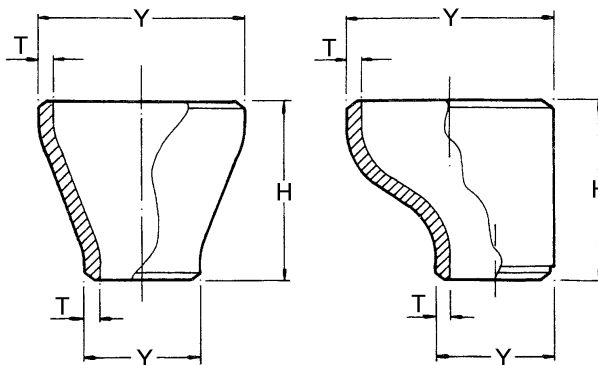
Nominal pipe size		Outside Diameter Y	Wall thickness T		Tees (C&M) mm	Approx weight mm	Caps End to face E mm	Approx weight Kg
mm	in		mm	schedule				
15	1/2"	21.3	2.78	STD	25.4	0.58		
			3.73	X.S	25.4	0.21		
20	3/4"	26.7	2.87	STD	28.6	0.21		
			3.91	X.S	28.6	0.27		
25	1"	33.4	3.38	STD	38.1	0.34	38.1	0.1
			4.55	X.S	38.1	0.43	38.1	0.14
32	1 1/4"	42.2	3.56	STD	47.6	0.64	38.1	0.14
			4.85	X.S	47.6	0.75	38.1	0.18
40	1 1/2"	48.3	3.68	STD	57.1	0.95	38.1	0.18
			5.08	X.S	57.1	1.13	38.1	0.23
50	2"	60.3	3.91	STD	63.5	1.45	38.1	0.27
			5.54	X.S	63.5	1.72	38.1	0.32
65	2 1/2"	73.0	5.16	STD	76.2	2.45	38.1	0.41
			7.01	X.S	76.2	2.95	38.1	0.45
80	3"	88.9	5.49	STD	85.7	3.45	50.8	0.64
			7.62	X.S	85.7	4.3	50.8	0.82
100	4"	114.3	6.02	STD	105.0	5.7	63.5	1.13
			8.56	X.S	105.0	7.3	63.5	1.54
125	5"	141.3	6.65	STD	124.0	9.1	76.2	1.91
			9.5	X.S	124.0	11.8	76.2	2.59
150	6"	168.3	7.11	STD	143.0	13.6	88.9	2.95
			10.97	X.S	143.0	19.0	88.9	4.1
200	8"	219.1	8.18	STD	178.0	25.0	101.6	5.0
			12.7	X.S	178.0	33.5	101.6	7.3
250	10"	273.0	9.27	STD	216.0	41.0	127.0	9.1
			12.7	X.S	216.0	54.0	127.0	12.0
300	12"	323.9	9.52	STD	254.0	57.0	152.4	13.6
			12.7	X.S	254.0	77.0	152.4	17.0
350	14"	355.6	9.52	STD	279.0	73.0	165.1	15.9
			12.7	X.S	279.0	93.0	165.1	21.0
400	16"	406.4	9.52	STD	305.0	91.0	178.8	20.0
			12.7	X.S	305.0	120.0	178.8	26.0
450	18"	457.0	9.52	STD	343.0	127.0	203.2	26.0
			12.7	X.S	343.0	165.0	203.2	34.0
500	20"	508.0	9.52	STD	381.0	227.0	228.6	33.0
			12.7	X.S	381.0	270.0	228.6	43.0
600	24"	610.0	9.52	STD	432.0	345.0	266.7	46.0
			12.7	X.S	432.0	430.0	266.7	61.0



Butt Weld Fittings to ANSI.B16.9 & BS1640: Concentric & Eccentric Reducers

Nominal Pipe Size Y		LENGTH H	SCHEDULE T	APPROX WEIGHT
MM	IN	MM		KG
20 x 15	3/4" x 1/2"	38.1	STD	0.07
			X.S	0.1
25 x 15	1" x 1/2"	50.8	STD	0.14
			X.S	0.18
25 x 20	1" x 3/4"	50.8	STD	0.14
			X.S	0.18
32 x 15	1 1/4" x 1/2"	50.8	STD	0.18
			X.S	0.23
32 x 20	1 1/4" x 3/4"	50.8	STD	0.18
			X.S	0.23
32 x 25	1 1/4" x 1"	50.8	STD	0.18
			X.S	0.23
40 x 15	1 1/2" x 1/2"	63.5	STD	0.27
			X.S	0.32
40 x 20	1 1/2" x 3/4"	63.5	STD	0.27
			X.S	0.32
40 x 25	1 1/2" x 1"	63.5	STD	0.27
			X.S	0.32
40 x 32	1 1/2" x 1 1/4"	63.5	STD	0.27
			X.S	0.32
50 x 15	2" x 1/2"	76.2	STD	0.41
			X.S	0.54
50 x 20	2" x 3/4"	76.2	STD	0.41
			X.S	0.54
50 x 25	2" x 1"	76.2	STD	0.41
			X.S	0.54
50 x 32	2" x 1 1/4"	76.2	STD	0.41
			X.S	0.54
50 x 40	2" x 1 1/2"	76.2	STD	0.41
			X.S	0.54
65 x 25	2 1/2" x 1"	88.9	STD	0.68
			X.S	0.91
65 x 32	2 1/2" x 1 1/4"	88.9	STD	0.68
			X.S	0.91

Nominal Pipe Size Y		LENGTH H	SCHEDULE T	APPROX WEIGHT
MM	IN	MM		KG
65 x 40	2 1/2" x 1 1/2"	88.9	STD	0.68
			X.S	0.91
65 x 50	2 1/2" x 2"	88.9	STD	0.68
			X.S	0.91
80 x 40	3" x 1 1/2"	88.9	STD	0.77
			X.S	1.09
80 x 50	3" x 2"	88.9	STD	0.91
			X.S	1.22
80 x 65	3" x 2 1/2"	88.9	STD	0.91
			X.S	1.27
100 x 40	4" x 1 1/2"	101.6	STD	1.36
			X.S	1.91
100 x 50	4" x 2"	101.6	STD	1.40
			X.S	1.95
100 x 65	4" x 2 1/2"	101.6	STD	1.45
			X.S	2.04
100 x 80	4" x 3"	101.6	STD	1.59
			X.S	2.08
125 x 80	5" x 3"	127.0	STD	2.5
			X.S	3.4
125 x 100	5" x 4"	127.0	STD	2.7
			X.S	3.8
150 x 50	6" x 2"	140.0	STD	3.4
			X.S	4.3
150 x 65	6" x 2 1/2"	140.0	STD	3.4
			X.S	4.5
150 x 80	6" x 3"	140.0	STD	3.6
			X.S	4.8
150 x 100	6" x 4"	140.0	STD	3.7
			X.S	5.2
150 x 125	6" x 5"	140.0	STD	3.9
			X.S	5.4



Butt Weld Fittings to ANSI.B16.9 & BS1640: Concentric & Eccentric Reducers

Nominal Pipe Size Y		LENGTH H	SCHEDULE T	APPROX WEIGHT
MM	IN	MM		KG
200 x 80	8" x 3"	152.4	STD	4.5
			X.S	7.2
200 x 100	8" x 4"	152.4	STD	5.0
			X.S	7.7
200 x 125	8" x 5"	152.4	STD	5.4
			X.S	8.2
200 x 150	8" x 6"	152.4	STD	5.9
			X.S	8.6
250 x 100	10" x 4"	178.0	STD	9.1
			X.S	11.8
250 x 125	10" x 5"	178.0	STD	9.5
			X.S	13.6
250 x 150	10" x 6"	178.0	STD	9.5
			X.S	13.6
250 x 200	10" x 8"	178.0	STD	10.0
			X.S	14.0
300 x 150	12" x 6"	203.0	STD	14.1
			X.S	18.1
300 x 200	12" x 8"	203.0	STD	14.5
			X.S	19.1
300 x 250	12" x 10"	203.0	STD	15.4
			X.S	20.0
350 x 200	14" x 8"	330.0	STD	26.3
			X.S	34.9
350 x 250	14" x 10"	330.0	STD	27.2
			X.S	36.3
350 x 300	14" x 12"	330.0	STD	28.6
			X.S	37.6
400 x 200	16" x 8"	356.0	STD	31.8
			X.S	42.6
400 x 250	16" x 10"	356.0	STD	33.1
			X.S	43.5
400 x 300	16" x 12"	356.0	STD	34.5
			X.S	45.4

Nominal Pipe Size Y		LENGTH H	SCHEDULE T	APPROX WEIGHT
MM	IN	MM		KG
400 x 350	16" x 14"	356.0	STD	35.4
			X.S	46.3
450 x 250	18" x 10"	381.0	STD	38.0
			X.S	52.1
450 x 300	18" x 12"	381.0	STD	39.0
			X.S	53.5
450 x 350	18" x 14"	381.0	STD	40.0
			X.S	54.9
450 x 400	18" x 16"	381.0	STD	40.8
			X.S	53.5
500 x 250	20" x 10"	508.0	STD	53.0
			X.S	79.9
500 x 300	20" x 12"	508.0	STD	54.4
			X.S	82.0
500 x 350	20" x 14"	508.0	STD	57.6
			X.S	80.2
500 x 400	20" x 16"	508.0	STD	58.9
			X.S	82.0
500 x 450	20" x 18"	508.0	STD	61.7
			X.S	82.0
600 x 300	24" x 12"	508.0	STD	63.5
			X.S	84.4
600 x 350	24" x 14"	508.0	STD	65.3
			X.S	86.8
600 x 400	24" x 16"	508.0	STD	68.0
			X.S	90.4
600 x 450	24" x 18"	508.0	STD	72.6
			X.S	96.5
600 x 500	24" x 20"	508.0	STD	77.1
			X.S	102.5

