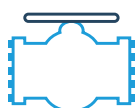


Product Overview

The complete engineering and process solution[®]



INSTRUMENTATION



VALVES AND CONTROLS



PIPELINE PRODUCTS



BOLTING AND FASTENERS



SERVICES



Instrumentation

PRESSURE

TRANSMITTERS | GAUGES | WIRELESS | SWITCHES | ASSEMBLIES

In addition to the market-leading technologies of Emerson's Rosemount pressure transmitters (models 2088, 2051, 3051, and 3051S) and Baker Hughes Druck UNIK 5000, we also provide a wide range of other pressure measurement and control products, including a comprehensive selection of pressure transmitters, switches and gauges from Wika.



TEMPERATURE

TRANSMITTERS | GAUGES | WIRELESS | SWITCHES | ASSEMBLIES

Our complete range of temperature solutions from Rosemount and Wika includes Sensors, Thermowells, Gauges, Switches and Transmitters. Whether it's a simple indicator, a general purpose 4 to 20mA or wireless measurement or a high integrity SIL application we have a solution to suit.



LEVEL

CONTACTING LEVEL | NON CONTACTING | LEVEL | SWITCHES | WIRELESS

Whether you want to measure or detect level in a simple or arduous environment, we have it covered with our range of mechanical and electronic level solutions. Floats, Magnetic, Vibrating Fork, Hydrostatic, Ultrasonic, Radar and Guided Wire technologies ensure we can help you deliver reliable and safe level control for both liquids and solids.



INDICATION | NON CONTACT | VOLUMETRIC MEASUREMENT | MASS MEASUREMENT | WIRELESS

FLOW

Whether you need to measure or indicate the volumetric or mass flow of liquids, gases or steam our complementary range of flow technologies from Emerson, Panametrics and Kobold will provide the answer. We can select from Variable Area, DP (Differential Pressure), PD (Positive Displacement), Magnetic, Vortex, Ultrasonic, Coriolis and Thermal Mass to ensure you capture every drop.





Instrumentation

LIQUID ANALYTICAL

Emerson offers a complete range of analytical sensors and instruments to help you more efficiently manage your process liquids and equipment. Choose from a selection of pH sensors, ORP sensors, conductivity sensors, dissolved oxygen sensors, ozone sensors, chlorine sensors, turbidity sensors and more.



GAS & MOISTURE ANALYTICAL

Panametrics has developed one of the strongest portfolios of gas and moisture analysers on the market, this includes a wide array of moisture analysers, hygrometers, gas and oxygen analyser systems that enable you to make process decisions with confidence. Accuracy and reliability are two of the greatest factors when choosing a moisture or gas analyser, their products and services are backed by decades of industry experience and by knowledgeable experts to help you understand your application.



STEAM SAMPLING SYSTEMS

DR. THIEDIG

Dr. Thiedig sampling systems designed to check water, steam or product samples under high pressure for possible contaminants. The method of sampling and analysis can be standardised for a wide range of applications.



CONTROL & RECORDING

When it comes to industrial and process control, Watlow's Eurotherm products are at the forefront in terms of measurement solutions, data management and acquisition. They design their products with an emphasis on process optimisation resulting in benefits in relation to operations and plant efficiency. This is demonstrated by a reduction in the engineering time required, as well as ease of use.



INTRINSIC SAFETY

Eaton MTL products are the ideal solution for both hazardous areas and general purpose in industries such as oil and gas, power generation, petrochemical, pharmaceuticals, telecommunications and other manufacturing plants. They are world renowned for their fieldbus power systems as well as their intrinsic safety and surge protection products.





Instrumentation

CALIBRATORS

PRESSURE | MULTIFUNCTION | TEMPERATURE | ELECTRICAL & FREQUENCY

Regular calibration of your instruments will ensure compliance and reduce risk of low-quality product. We demonstrate, supply and stock the full Druck Portfolio which includes the DPI610E, DPI620 & PV624, Mesa Labs Drycal range of high-capacity gas flow calibrators and Wika's Deadweight testers. Our range includes Pressure, Temperature, Flow, Electrical, Frequency, Loop Calibrators and Hand Pumps.



INDICATORS

We supply and stock both Intrinsically Safe and Safe Area Druck DPI 705E handheld pressure indicators and their DPI 104 digital pressure indicators through to the high precision PACE1000, designed for test bench, benchtop and panel mount calibration, test and monitoring applications.



CONTROLLERS

The PACE family from Druck are a range of highly-rated PACE pressure controllers and indicators that measure, test and calibrate pressure. The PACE 1000 series run applications from airfields to automotive to atmospheric pressure sensing and monitoring, while the PACE 5000/6000 modular sensor delivers speed, precision and control.



COMMUNICATORS



When assets are not performing properly, or issues go undiagnosed in the plant, it can cause costly unexpected downtime, both Emerson's AMS Trex Communicator & the Druck Genii enable simple issues to be addressed on the spot, avoiding unnecessary, and potentially destructive, invasive physical investigation of the problem.

SOFTWARE

Managing and getting the best from your installed base of instrumentation is difficult at the best of times and when you factor in organising technicians, production schedules and reporting, it's a significant challenge. The latest 4Sight2 software from Druck can help manage your calibrations and meet stringent standards expected from today's process industry. Emerson's AMS-ValveLink software gives you an eye into the process using on-line diagnostics and can help predict if you need to remove your critical valves for servicing.





Valves & Controls

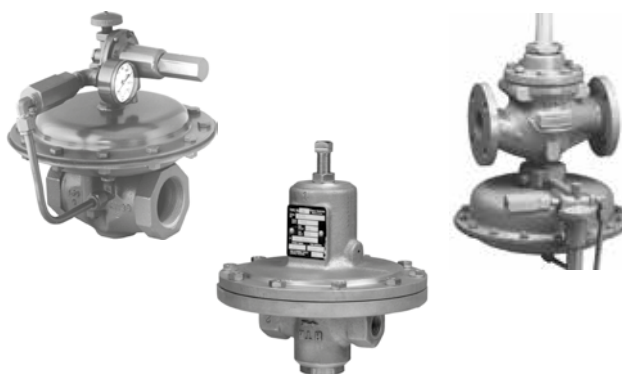
CONTROL VALVES

We can help control your process (flow, level, temperature, pressure) by selecting the optimum type of control valve (Globe, Butterfly, Vee-Ball, Control Disk) from the wide range we have available from Fisher and Baumann.



REGULATORS

Regulators do not require any power and are self-contained control devices. We can help you regulate your process (liquid, gas, and steam) or control your Tank Blanketing/ Vapour Recovery by selecting a regulator from our range of Fisher Regulators.



QUARTER TURN VALVES

Our range of Manual or Actuated Quarter Turn Valves will ensure you can reliably and safely shut off your process. We can select the best type (Ball, Butterfly, Gate and Globe Valves) for your application and supply fitted with Pneumatic or Electric Actuator, Solenoids and Switch Boxes.



ACTUATORS

We can supply Electric, Pneumatic and Hydraulic Valve Actuators and Gearboxes to manage the flow of liquids, gases and powders. Single or Double Acting Valve Actuators and fully assembled and tested valve packages are available.



POSITIONERS

Our range of Fisher DVC (digital valve controllers) fitted with 'linkage free position feedback' ensures high reliability and low maintenance valve control. Retrofitting to existing valves will improve performance and can be done on most manufacturers' valves. We also supply Pneumatic and Electro-Pneumatic Positioners for traditional installations.



SOLENOIDS

We partner with ASCO Numatics who manufacture a range of high-quality Solenoid Valves and Pneumatic Control Devices for industrial fluid automation applications. Safe and Hazardous area versions are available and include Solenoids, Pilot Valves, Valve Islands and Proportional Valves.



MANIFOLDS

Primary Isolation, Single and Double Block & Bleed and Instrument Manifolds that provide isolation, venting, and equalization for various types of pressure measurement applications from Emerson, Wika & Oliver are all available to support our range of instrumentation.





Pipeline Products

STEAM TRAPS

We can help you better manage your steam network with the aid of our Armstrong range of Traps, Strainers, Tracing and Condensate Recovery Solutions. Automatic steam quality equipment can also be supplied that will allow you to monitor and measure the efficiency of your steam network.



STEAM TRACING SYSTEMS

The space-saving TVS delivers benefits on several fronts, including installation, testing and maintenance. Armstrong's steam distribution and condensate collection manifolds bring together all the necessary components – Steam Traps, Manifolds and Valves. For you, this means lower installation costs and a compact, easily accessible, centrally located assembly. These units are especially important in tracer applications, where steam lines are used to follow or 'trace' a pipe to keep the fluid inside at a uniform temperature.



CONDENSATE RECOVERY

Condensate Recovery allows you to use all of the valuable Btu within the steam system. Depending on the pressure, condensate leaving a trap contains approximately 20% of the heat energy transferred at the boiler in the form of sensible heat. Condensate recovery systems help you reduce three tangible costs of producing steam: fuel/energy costs, boiler water make-up and sewage treatment and boiler water chemical treatment.



STEAM QUALITY MONITORING

Until now measuring the steam dryness fraction has largely been a manual process which is time consuming and presents inherent safety and accuracy risks. Steam QM-1 is an automatic steam quality monitor which determines and communicates the dryness fraction of the steam continuously allowing people to supervise efficiently their steam network.



LINE PIPE & TUBE

We carry and supply API 5L/ASTM A106 Grade B carbon steel, ASTM A333 Gr. 6 low temperature, stainless steel, Duplex, CuNiFe and chrome grades.



CARBON/ LOW TEMP STEELS	HIGH YIELD STEELS	CHROME MOLYBDENUM	AUSTENITIC STAINLESS STEELS	DUPLEX STAINLESS STEELS	NICKEL ALLOYS	COPPER ALLOYS
API 5L Grade B	API 5L X42	ASTM A335 Grade P1	ASTM A312/358 TP304/L	ASTM A790 UNS 31803	ASTM B444 UNS NO6625	Cu/Ni 90/10
ASTM A106 Grade B (Galv and self colour)	API 5L X52	ASTM A335 Grade P5	ASTM A312/358 TP316/L	ASTM A790 UNS S32750 + 32760	ASTM B423 UNS NO8825	—
ASTM A333 Grade 6	API 5L X60	ASTM A335 Grade P9	ASTM A312/358 TP321/H	ASTM A928 UNS S31803	ASTM B407 UNS NO8800	—
—	API 5L X65	ASTM A335 Grade P11	ASTM A312/358 TP347/H	ASTM A928 UNS S32750 and S32760	ASTM B407 UNS NO8810/11(HT)	—
—	API 5L X70	ASTM A335 Grade P22	ASTM A312/358 UNS S31254	—	—	—
—	—	ASTM A335 Grade P91	—	—	—	—

STAINLESS STEEL INSTRUMENT TUBING

Instrumentation tubes are available from stock in a comprehensive range of corrosion resistant stainless steels and nickel alloys.



COPPER TUBING

Our standard stock range of imperial and metric soft copper tube are 30 metre coils, also available in black, white, blue, yellow and red PVC sheathing.



NYLON TUBING

A comprehensive range of natural and coloured nylon tube in imperial and metric dimensions, stocked in 30 metre coils.





Pipeline Products

FLANGES

From stock we have an extensive range of Slip-on, Weld Neck, Socket Weld, Blind, Lap Joint, Screwed Flanges, Weldoflanges and Nipoflanges. All sizes are available in a wide range of standards and materials including carbon steel, stainless steel and alloy steels. Please visit our website for full details.



GASKETS

We partner with Flexitallic who for over 100 years, have been at the forefront of the gasket and sealing industry, providing innovative sealing solutions, including Thermiculite® high temperature gasket material, the Change™ metal wound Heat Exchanger Gasket, and their Flange Rescue Gasket. Additionally we distribute the KaMOS® Intelligent Kammprofil Gasket – a method of leak testing flanges with ring joints measuring whether tightness has been achieved on all sealing surfaces of the flange before the flange and pipe are subjected to internal pressure, as well as monitor the flange connections for future leakages.



BUTTWELD FITTINGS

Buttweld fittings BS 1640/ANSI B16.9. A stock of standard fittings is maintained, however requirements involving large diameter, thick wall or special material grades are very much part of our supply capability and history.

Standard material grades:

- ASTM A234 Grd WPB
- ASTM A105N
- Low temperature and other material grades on request



FORGED FITTINGS

High quality forged steel fittings and unions, available in an array of classes and material grades for any application.

- BS 3799/ANSI B16.11 Socket Weld and Screwed
- Branch Welding Outlets forged steel
- Buttweld, Socket Screwed, PE and Flanged



COMPRESSION FITTINGS

Waverley Brownall's Ringlok® and Duoloc® 316 stainless steel compression fittings and Vale Brass compression fittings plus a comprehensive range of pneumatic push in fittings all from stock.





Bolting & Fasteners

CERTIFIED BOLTING

Since 1972, MJ Wilson Group has been servicing the oil, gas, petrochemical, power, nuclear and associated markets with high integrity certified bolting. We offer an extensive range of studding, studbolt assemblies, hexagon products and specials with raw materials carefully sourced from only quality European stockists/mills, all complete with 3.1 certification. Any fastener to your standard or specialist machining requirement can be supplied, whilst meticulously ensuring that all elements of any specifications are covered.



STOCK RANGE

Our standard stocked range includes bar, nuts and assemblies in grades B7, L7, B7M, L7M, B7A, B16, B8 class 1 and 2 and B8M class 1 and 2, with sizes ranging from M10/3/8" to M72/3".

PRODUCT	SIZE FROM	SIZE TO
Threaded Bar		
A193/A320 B7/L7 studding	M10	M72
A193/A320 B7/L7 studding	1/2"	3"
A193 B16 studding	1/2"	3"
B7A/Durehete studding	1/2"	1.1/2"
B8 class 1, B8 class 2	1/2"	1.1/2"
B8 class 1, B8 class 2	M12	M39
B8M class 1, B8M class 2	1/2"	1.1/2"
B8M class 1, B8M class 2	M12	M39
Nuts		
A194 2H, 4L, 7L	1/2"	3"
A194 2H, 4L, 7L	M12	M72
A194 G8, 8M (also 8MS1)	1/2"	1.1/2"
A194 G8, 8M	M12	M39
Assemblies		
B7/2H self colour imperial	1/2" x 2"	1.1/2" x 10"
B7/2H self colour metric	M12 x 60	M36 x 300
L7/7 HDG stud and 2 nuts	1/2" x 2"	1" x 8"
B7/2H HDG stud and 2 nuts	1/2" x 2"	7/8" x 6.1/2"
B7/2H zinc stud and 2 nuts	1/2" x 2"	7/8" x 6.1/2"
B7/2H zinc stud and 2 nuts	M12 x 60	M30 x 200

IN-HOUSE PRODUCTION

We have invested heavily in our on-site, in-house production facility, in relation to both machinery and machine operators. We can produce nearly every studbolt requirement – in its original state, coated and/or heat treated.



SPECIALIST MACHINED BOLTING

In addition to our own production facility, we have strategically located partnerships both in the UK and Europe, to produce any fastener to any specification or drawing. Materials include A453, 660A, B, C and D, T41/ Durehete 1055, Monel, Inconel, Duplex, Super Duplex and Titanium.



AVAILABLE MATERIALS & COATINGS

All material grades in these markets are catered for usually in both ASME and ASTM standards. We offer a wide range of coatings and treatments such as PTFE/Xylan™, zinc plating, galvanised and heat treated.





Bolting & Fasteners

FASTENINGS

We have a comprehensive range of standard fastenings covering a multitude of threads, heads, diameters, lengths and materials. With an extensive knowledge of the fasteners and fixing industry we offer all our customers a level of service that is second to none, ensuring they receive the right products, at the right time, at the right place and with the right certification. Additionally, bespoke and non-standard fastenings can be provided in all materials including plastics and polymers through to aluminium and titanium.

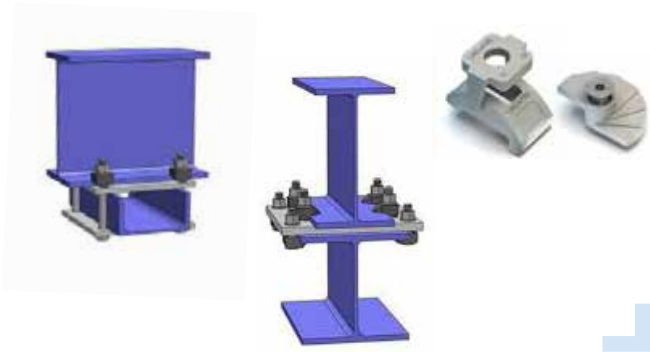


DESCRIPTION	THREADS	GRADES & MATERIALS
HEXAGON BOLTING	Metric, UNC, UNS, UNF, BSW, BSF and BA	High tensile A2 and A4 stainless steel
THREADED ROD PRODUCTS	Metric, UNC, UNS, UNF, BSW, BSF and BA	Steel, high tensile, brass, B7, L7, B7M, L7M, B7A, B16, B8 class 1 and 2 and B8M class 1 and 2 A2 and A4 stainless steel
HEXAGON NUT PRODUCTS	Metric, UNC, UNS, UNF, BSW, BSF and BA	Full, half-lock, Nyloc, Aerotight, Philidas, dome and wing nuts A2 and A4 stainless steel
WASHERS	Flat – metric and imperial – forms A, B, C, E, F, G, T3 and T7	Spring, shakeproof, taper, plate and through hardened also stocked A2 and A4 stainless steel
SOCKET SCREW PRODUCTS	Metric, UNC, UNF, BSW, BSF and BA	High tensile grades 8.8, 10.9, 12.9 A2 and A4 stainless steel

We have been supplying fasteners for over 50 years and can supply all threads and all types of fasteners and fastener managed services.

LINDAPTER

Lindapter is the world's innovator of steelwork clamping systems, eliminating the requirement to drill or weld steel. In comparison to traditional connection methods, Lindapter solutions allow rapid installation, significantly reduced costs whilst preserving the integrity of the steelwork.



UNISTRUT

The original Unistrut Metal Framing System still provides today a quick, economical and easy way of building both temporary and permanent structures as required by electrical, mechanical and industrial services. With over 65 years experience and investments, Unistrut have increased their already extensive product portfolio, with a variety of cable management solutions and advanced metal framing systems.



I-ROD/NU-BOLT

All styles of pipe supports – including beam supports and pipe saddles – create crevices where water is trapped and held in constant contact with the pipe surface. Once corrosion starts in these pockets, it can quickly undercut the paint film and rapidly cause wall loss as it expands from the crevice. If these conditions are not addressed, entire sections of pipe can fail and require replacement. Deepwater developed the I-Rod/Nu-Bolt pipe support system specifically to ensure longer, safer lives for pipes by eliminating crevices between pipes and supports.



RAWLPLUG

The Rawlplug® brand began in 1919 when John J Rawlings developed the then revolutionary fibre plug. They have been synonymous with innovation, reliability and safety in the development and manufacture of construction anchors and ancillary products. Innovation remains at the heart of Rawlplug's success, including significant developments of torque controlled anchors and bonded anchor systems for safety critical applications.





Services

LAB CALIBRATION

We can calibrate the vast majority of process instruments in use today, including temperature, pressure, electrical, dimensional, force, mass, torque, pH, humidity, time, and speed. This is done using our own workshops and a wide range of specialised, traceable test instrumentation, supporting 29 measurements traceable to UKAS or National Standards.



SITE CALIBRATION

The fully-qualified engineering team based at our Cardiff facility also allows us to offer a full range of on-site activities on either a routine or an emergency call out basis. Our technical expertise includes a team of engineers and technicians to investigate and develop your plant performance.



STEAM TRAP SURVEYS

Trap surveys are performed using an ultrasonic stethoscope or an infrared thermometer. The thermometer is used to check the temperatures upstream and downstream of the trap (analyse subcooling, analyse back-pressure). The stethoscope is used to analyse how the trap is operating and to determine the leak level. If possible, the technician will also observe the trap's discharge to the atmosphere.



SERVICE PLANS

DR. THIEDIG STEAM SAMPLING SYSTEMS: We offer system surveys in which we provide our observations, findings and recommendations, additionally we can provide site service, service plans, commissioning and start up assistance. We carry an extensive range of spares for all Dr Thiedig sampling systems.

Dr. Thiedig

Sampling & Analysing Systems

FINDING A WAY SINCE 1972

We create solutions that use only certified and compliant products from reliable, trusted, and renowned brands. We are now the leading supplier of process instrumentation, valves and controls, calibration equipment, and pipeline products, including certified bolting and fasteners.

Our engineers are on hand to provide your company with custom solutions that incorporate the latest technologies, products, and services — all developed with certainty, efficiency, and safety at their core. We measure. We optimise. We enhance. We ensure your business is engineered to perform.

Our service is:



EFFICIENCY ENGINEERED

Custom solutions and technical support to keep you operating at peak performance at all times.



PARTNERSHIP ENGINEERED

As your trusted partner, we work closely to understand your business needs.



VALUE ENGINEERED

Being right the first time is important. We provide you with the right set of solutions at the right cost – adding value to help your business perform.



CONSISTENCY ENGINEERED

When you need to be prepared for the next challenge, we're already there with the solution and support.



SAFETY ENGINEERED

Keep your people safe with certified solutions that perform reliably in the most demanding conditions.



Cert No 11283



Membership Number:
C10061



AchillesID: 00024164



AchillesID: 00024164



AchillesID: 00024164



Cert No SQ0823



WWW.MJWILSONGROUP.COM
SALES@MJWILSONGROUP.COM



@MJWilsonGroup



/MJWilsonGroup

GRIMSBY
T: 01472 361 425

SHEFFIELD
T: 0114 242 0825

PEMBROKE
T: 01646 680 448

CARDIFF
T: 02920 815 000

EDENBRIDGE
T: 01732 868 060
T: 01474 357 660



EFFICIENCY ENGINEERED



VALUE ENGINEERED



SAFETY ENGINEERED



PARTNERSHIP ENGINEERED



CONSISTENCY ENGINEERED



MJ WILSON
GROUP